



PER MONTH

£2,300 Per Month

Jesmond Dene Road

Newcastle Upon Tyne, NE2 2NL

Available now, unfurnished. A three storey period terrace situated on Jesmond Dene Road in Newcastle Upon Tyne. With its striking period features, this property exudes character and charm, making it an ideal choice for families seeking a unique living space.

Upon entering, you are greeted by two spacious reception rooms, perfect for entertaining guests or enjoying quiet family evenings. The generous layout allows for versatile use, whether you envision a formal dining area or a cosy lounge. The downstairs WC and well-appointed kitchen enhances the practicality of the home.

The property boasts four well-proportioned bedrooms, providing ample space for relaxation and rest.

One of the standout features of this property is its prime location, situated directly opposite the picturesque Jesmond Dene. This beautiful park offers a tranquil escape from the hustle and bustle of city life, with its lush greenery and scenic walking paths, perfect for leisurely strolls or family outings.

4



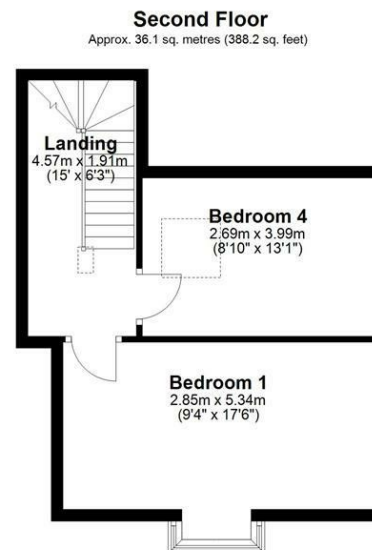
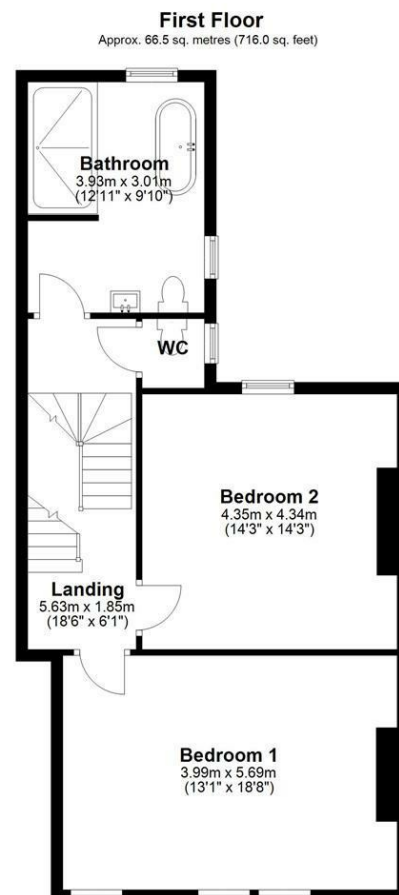
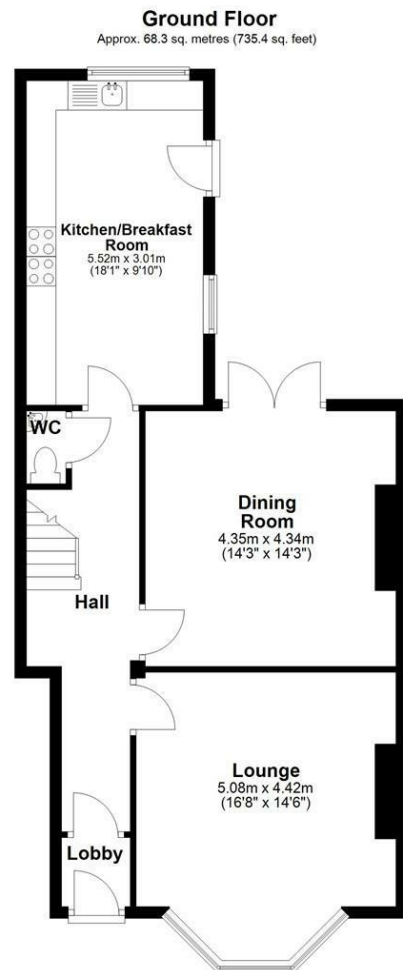
1



2







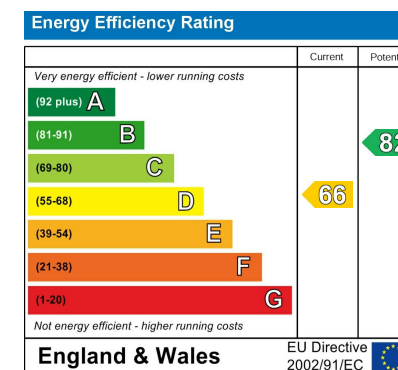
Total area: approx. 170.9 sq. metres (1839.5 sq. feet)

LOCAL AUTHORITY
Newcastle Upon Tyne

TENURE

COUNCIL TAX BAND
F

VIEWINGS
By prior appointment only



Agents Note: Whilst every care has been taken to prepare these particulars, they are for guidance purposes only. All measurements are approximate and are for general guidance purposes only and whilst every care has been taken to ensure their accuracy, they should not be relied upon and potential buyers/tenants are advised to recheck the measurements



OFFICE ADDRESS
63 Church Way
North Shields
Tyne & Wear
NE29 0AE

OFFICE DETAILS
0191 257 6823
hello@fresh.property
www.freshpropertycentre.co.uk